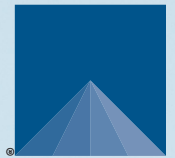




METER



ZL9
DATA LOGGER

SUPPORT

Have a question or problem? Our support team can help.

We manufacture, test, calibrate, and repair every instrument in house. Our scientists and technicians use the instruments every day in our product testing lab. No matter what your question is, we have someone who can help you answer it.

NORTH AMERICA

Email: support.environment@metergroup.com
Phone: +1.509.332.5600

EUROPE

Email: support.europe@metergroup.com
Phone: +49 89 12 66 52 0

ZL6 QUICK START

Preparation

Inspect and verify ZL6 components are intact. Installation will require a mounting post.

Install the enclosed batteries and press the TEST button. The status lights will eventually settle to a short, single green blink every 5 s, signaling it is ready for use.

Read the full [ZL6 User Manual](http://metergroup.com/zl6-support) at metergroup.com/zl6-support. All products have a 30-day satisfaction guarantee.

NOTE: The ZL6 case is water resistant, not waterproof. See the ZL6 User Manual for tips to use the logger in extremely wet environments.

Data Access with ZENTRA Cloud

ZENTRA Cloud is a cloud-based web application to download, view, and share ZL6 data as well as change logger configurations. Visit zentracloud.com to access all ZL6 data online. **A free trial of ZENTRA Cloud is available for new users.**

Configuration

Test sensor function and ZL6 communications prior to field installation.

Using a Computer

Use the ZENTRA Utility Installer link on the ZL6 webpage (metergroup.com/zl6-support) to download ZENTRA Utility.

Connect the micro-USB cable to computer and logger.

Open the ZENTRA Utility application, select the appropriate COM port, and select Connect.

Using a Smartphone or Tablet

Open the mobile app store and search for ZENTRA Utility Mobile or scan the QR code to open the METER ZENTRA Apps website.

On the ZL6, push the TEST button to activate the Bluetooth module.

On the smartphone, select the device in Devices Found.

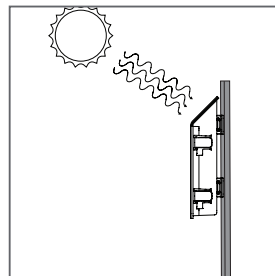


For answers to common questions, visit metergroup.com/environment/faqs/zl6

Installation

1. Select Location

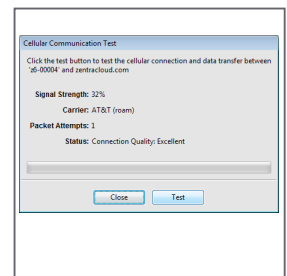
Choose a location and orientation to give the solar panel the maximum amount of sunlight. Consider vegetation cover throughout the season, distance from power lines, livestock, metallic objects, etc.



2. Check Cellular Signal

Use the Cellular Test feature of ZENTRA Utility or ZENTRA Utility Mobile to check the quality of the cellular signal at the chosen location.

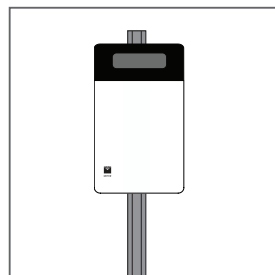
If the test fails, move to an alternative location (sometimes moving only a few meters is sufficient).



3. Fasten Logger to Mounting Post

Use included zip ties to attach the ZL6 to a mounting post.

Ensure the logger is installed in an upright position to reduce the possibility of water entering the ZL6 enclosure.



4. Install Sensors

Install sensors according to the user manuals. Plug the sensor connectors into the ZL6 sensor ports. Secure cables to mounting post with some cable slack.

Configure measurement interval and sensor settings using ZENTRA Utility or ZENTRA Utility Mobile. Review sensor instantaneous measurements to verify the installed sensors are working.

