

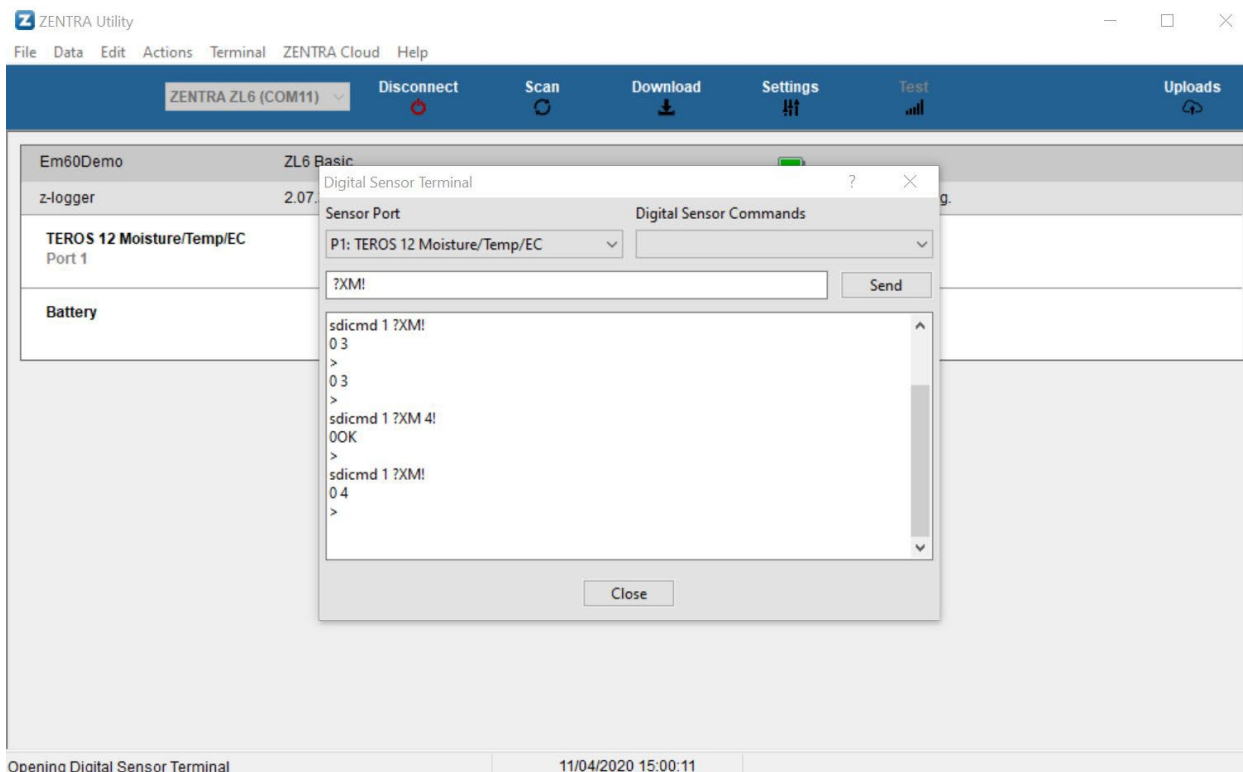


METER  
ENVIRONMENT

## WHAT TO DO IF YOUR SENSOR FW UPDATE FAILS

ZL6 FW versions < 2.07 have a bug in their updater that may report success yet fail to update the sensor. Follow the procedure below to change the settings for the update to be successful.

1. Go to Actions and launch the digital sensor terminal.
2. Select the appropriate port for the sensor that you would like to talk to from the sensor port drop down menu. If your port is not available, exit to the main screen and configure the sensor port to the correct sensor. Please note that ZENTRA Utility cannot auto-configure its ports if the sensor address is non-zero. You will need to configure it manually. Refer to [the manual](#) for configuration instructions. Only digital sensors are available in the drop down.
3. Type the command ?XM! Into the command line and press Send. The sensor will return the SDI-12 address and baud modulation setting. This setting will be either a 3 or a 4.
4. Change the setting to the opposite of its current state with the command ?XM #!. For example: ?XM 4! Will change the setting to 4. It will return OK if successful.
5. Double check with another ?XM! Command.
6. Return to the [FW update instructions](#) and try again.



## QUESTIONS?

[Talk with a support expert](#)—Our scientists have decades of experience helping researchers measure the soil-plant-atmosphere continuum.

REQUEST A QUOTE

CONTACT US